

MEN'S SHELTERS IN GERMANY USER STATISTICS 2023

IN A THREE-YEAR COMPARISON

DEFINITION AND METHODS

// MEN'S SHELTERS

- Temporary (3 - 6 months) and anonymous shelter for men aged 18 and over who are affected by:
 - acute domestic violence
 - forced marriage
- Admission criteria:
 - Ability to live independently (no serious mental health problems, addiction, homelessness)
 - Not a perpetrator of violence

15 men's¹
shelters with
48 places

1 place for
1,120 affected
men²



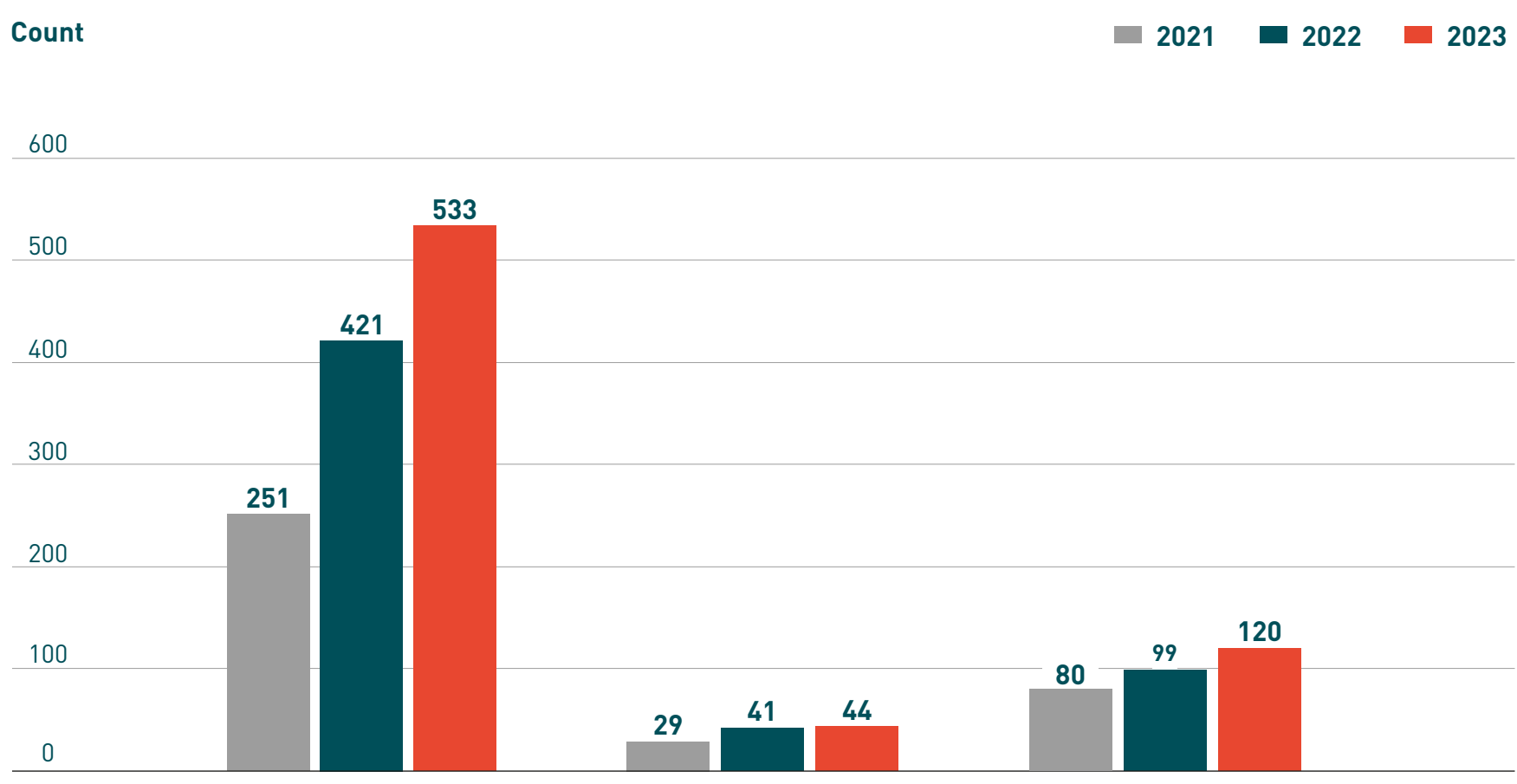
¹contains three shelters that are accessible, for people of all genders
²based on the figures from the 2022 Police Crime Statistics

// METHODS

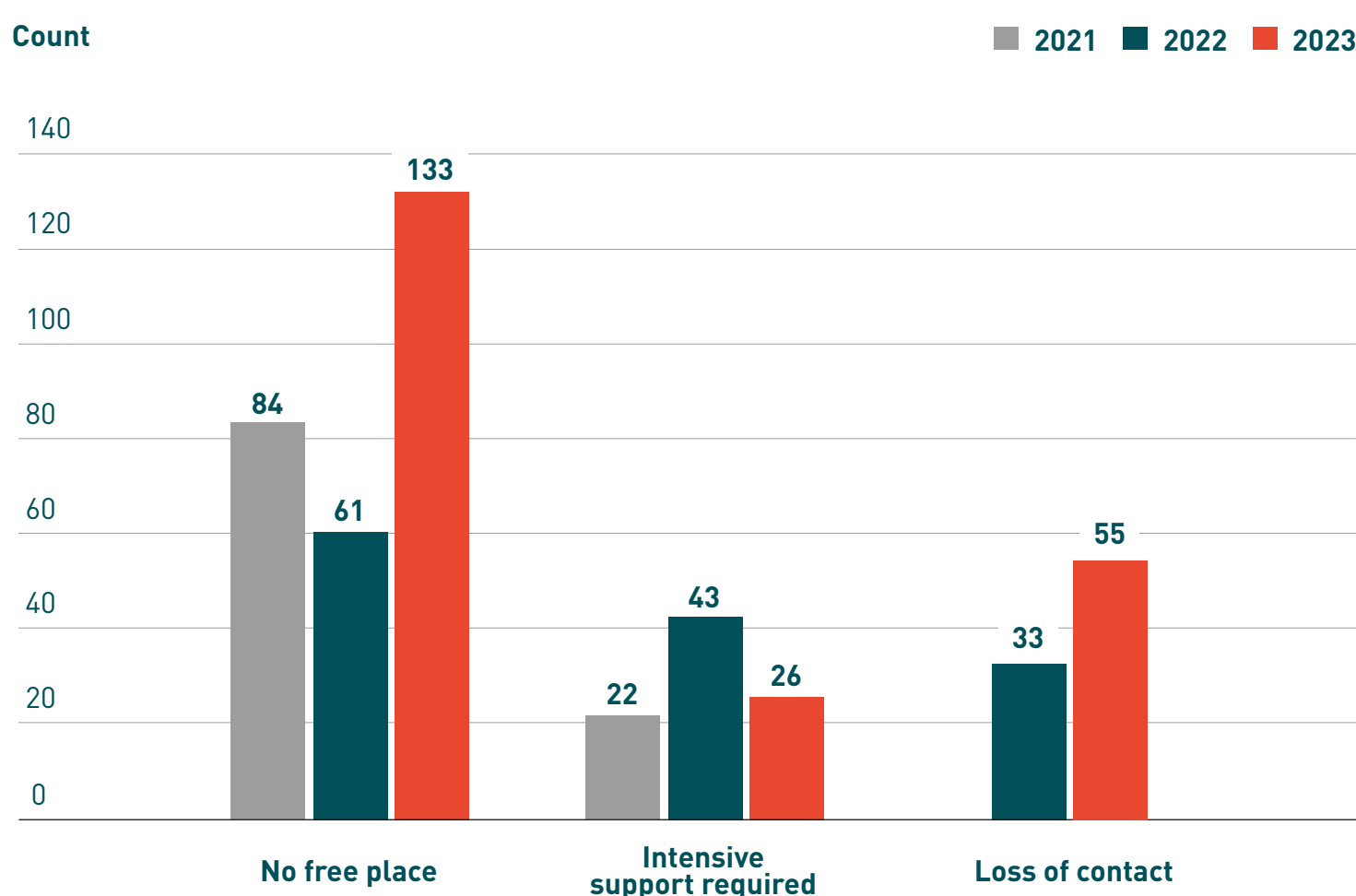
- Nationwide data collection: The evaluation is based on data from 13 men's shelters with a total of 44 places and the 120 men accommodated there.
- The data of the men seeking protection are collected by the employees and entered in anonymised form into the standardised survey form.

RESULTS

// REQUESTS, MOVE-INS AND REJECTIONS



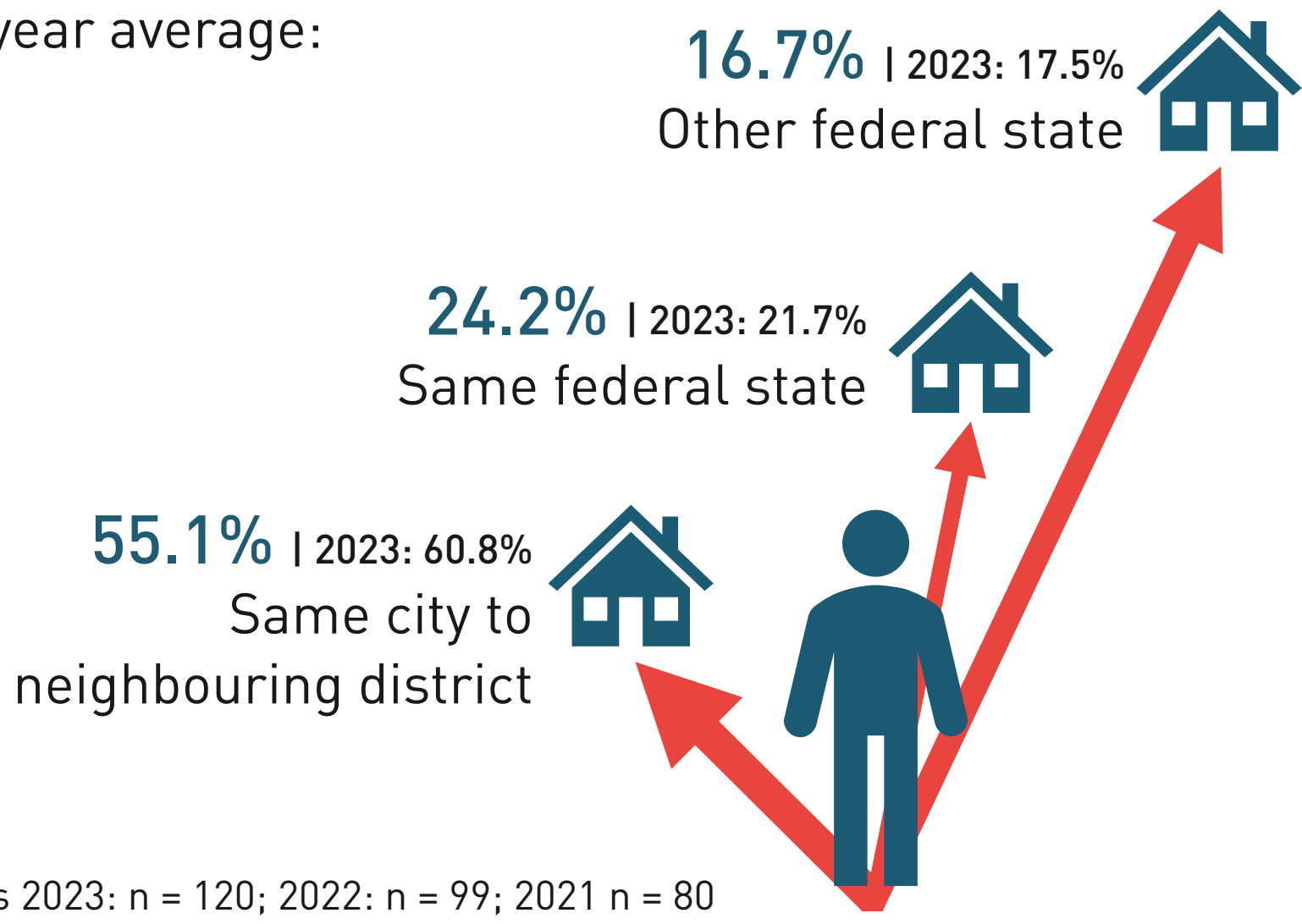
Increase in requests by **112.5%** from the first reporting year (2021) to the current reporting year (2023).



The proportion of men who had to be turned away due to full capacity increased by **118%** compared to the previous year.

// PREVIOUS PLACE OF RESIDENCE

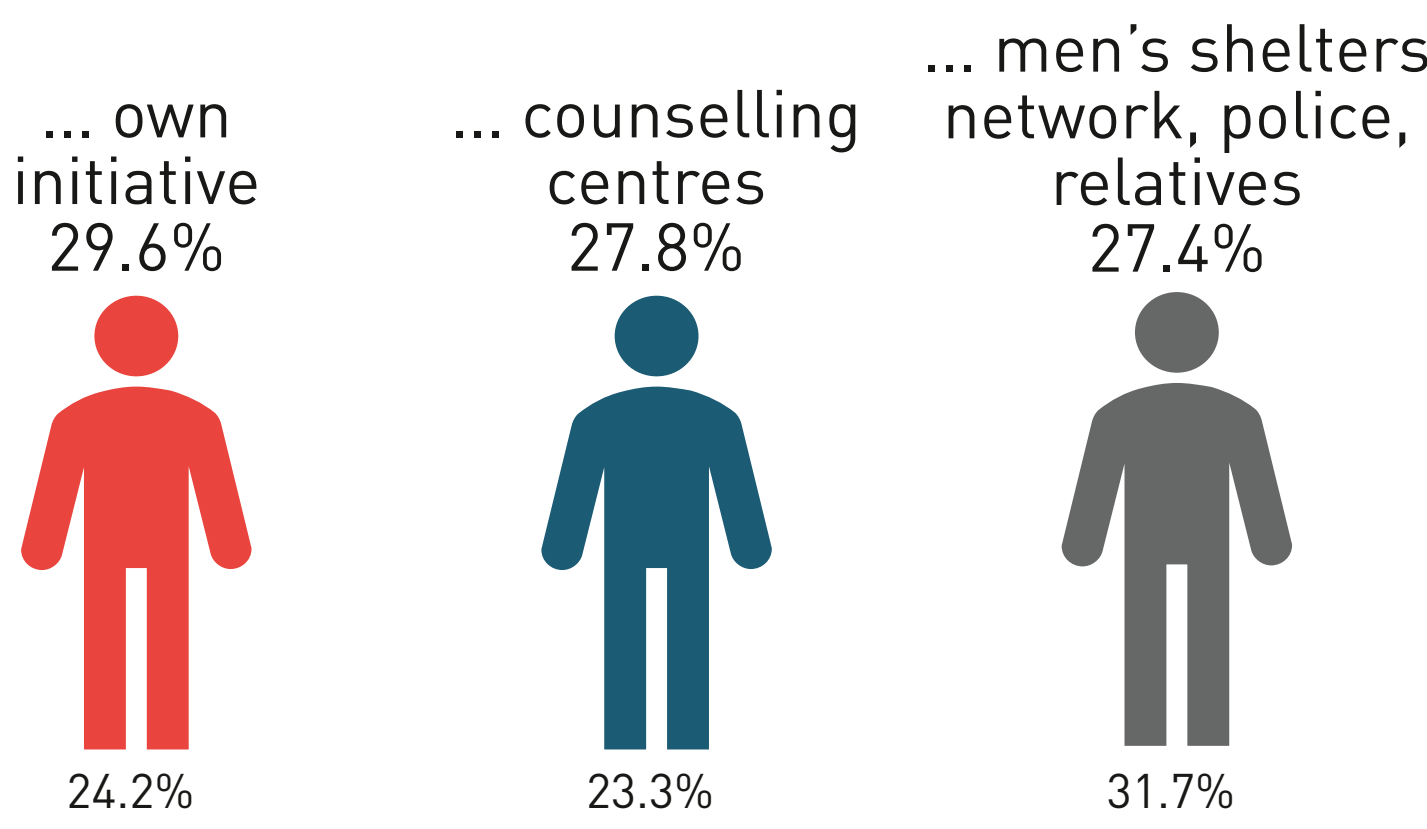
Three-year average:



Residents 2023: n = 120; 2022: n = 99; 2021 n = 80

// ENTRY ROUTES

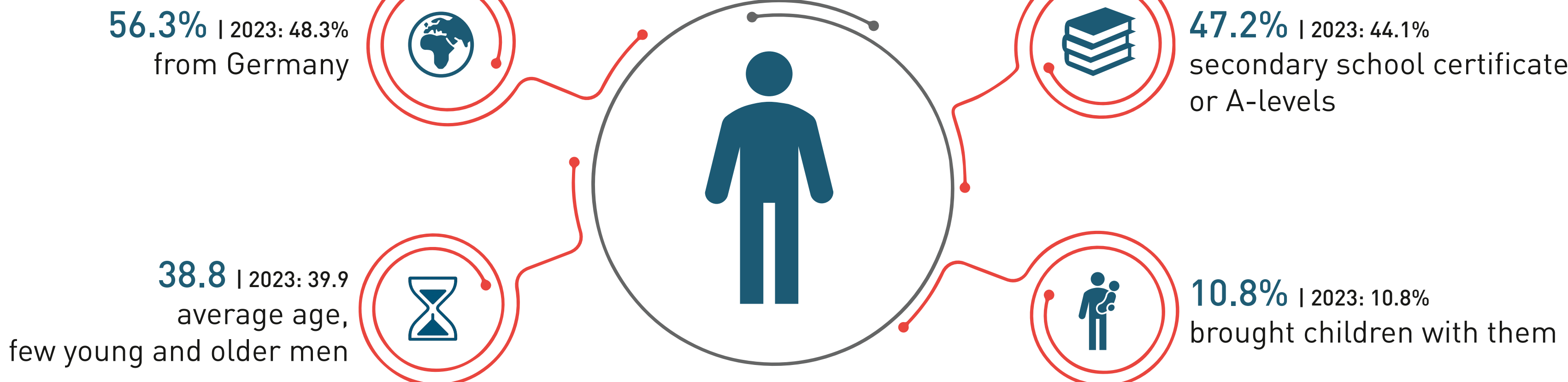
On the three-year average, access was primarily gained through



Residents 2023: n = 120; 2022: n = 99; 2021 n = 80

// SOCIODEMOGRAPHICS OF RESIDENTS

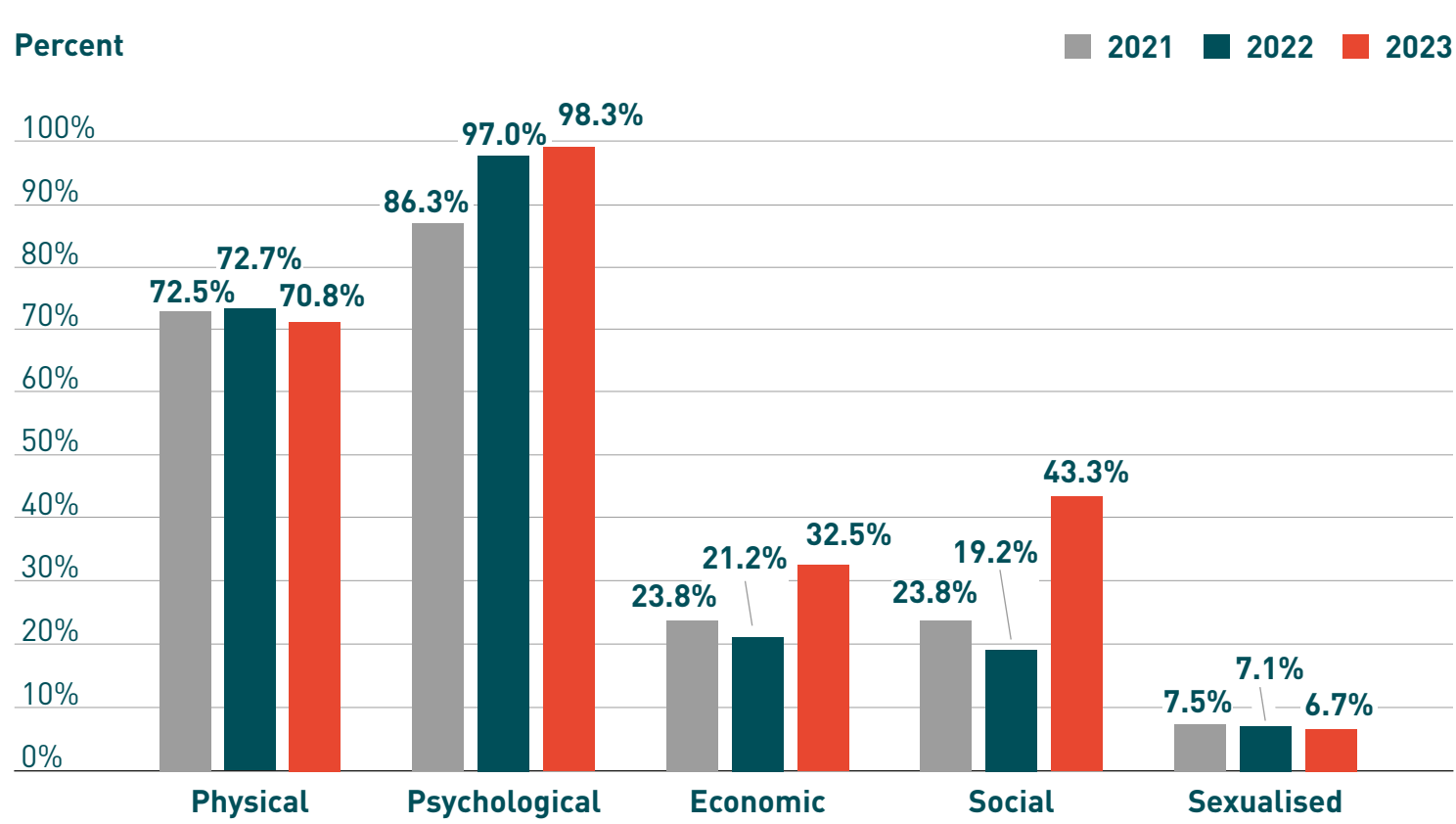
Three-year average:



Residents 2023: n = 120; 2022: n = 99; 2021 n = 80

// EXPERIENCES OF VIOLENCE

83.5% were affected by multiple forms of violence over the three-year period. Many sought help within 12 months.

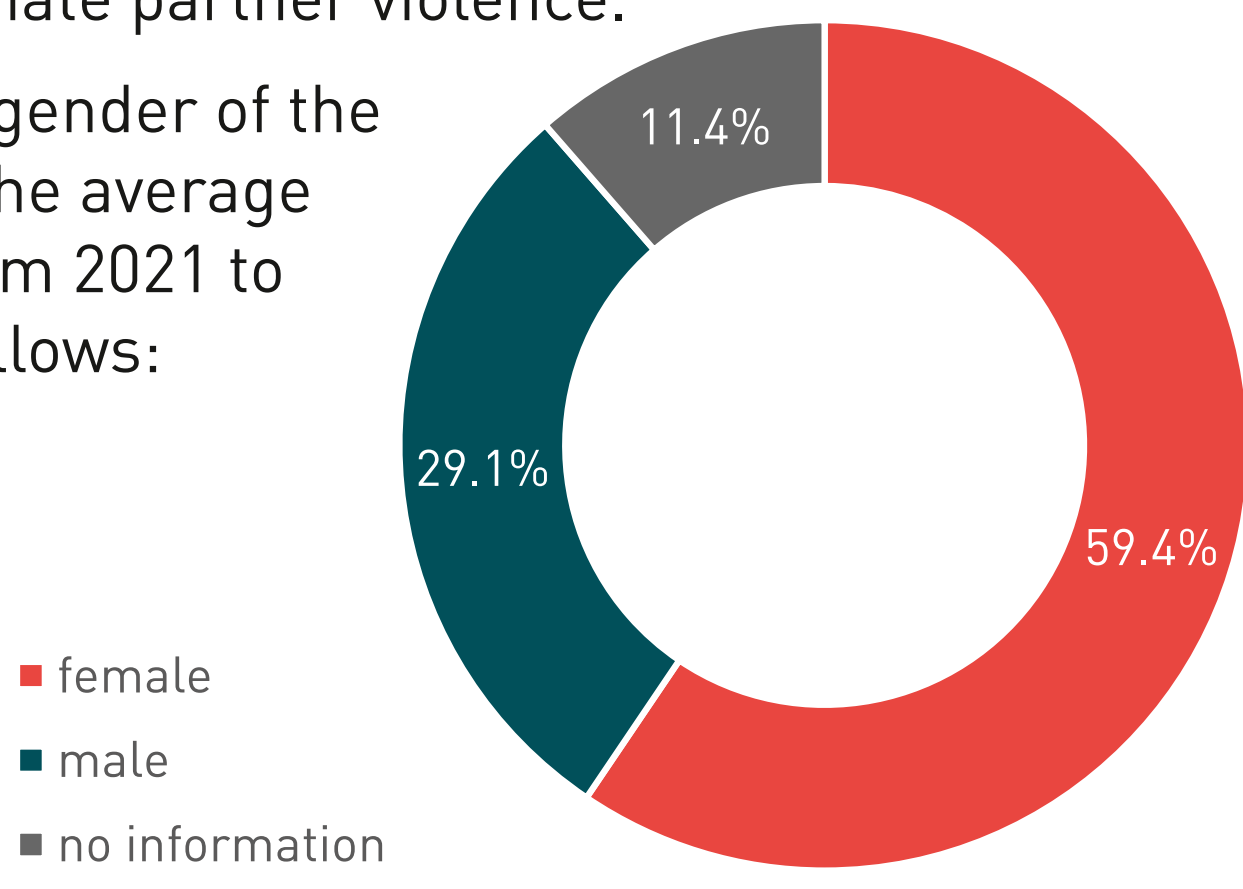


Residents 2023: n = 302; 2022: n = 215; 2021: n = 172 (Multiple answers possible)

// RELATIONSHIP TO THE PERPETRATOR

In the three-year comparison, **60.4%** of those affected experienced intimate partner violence.

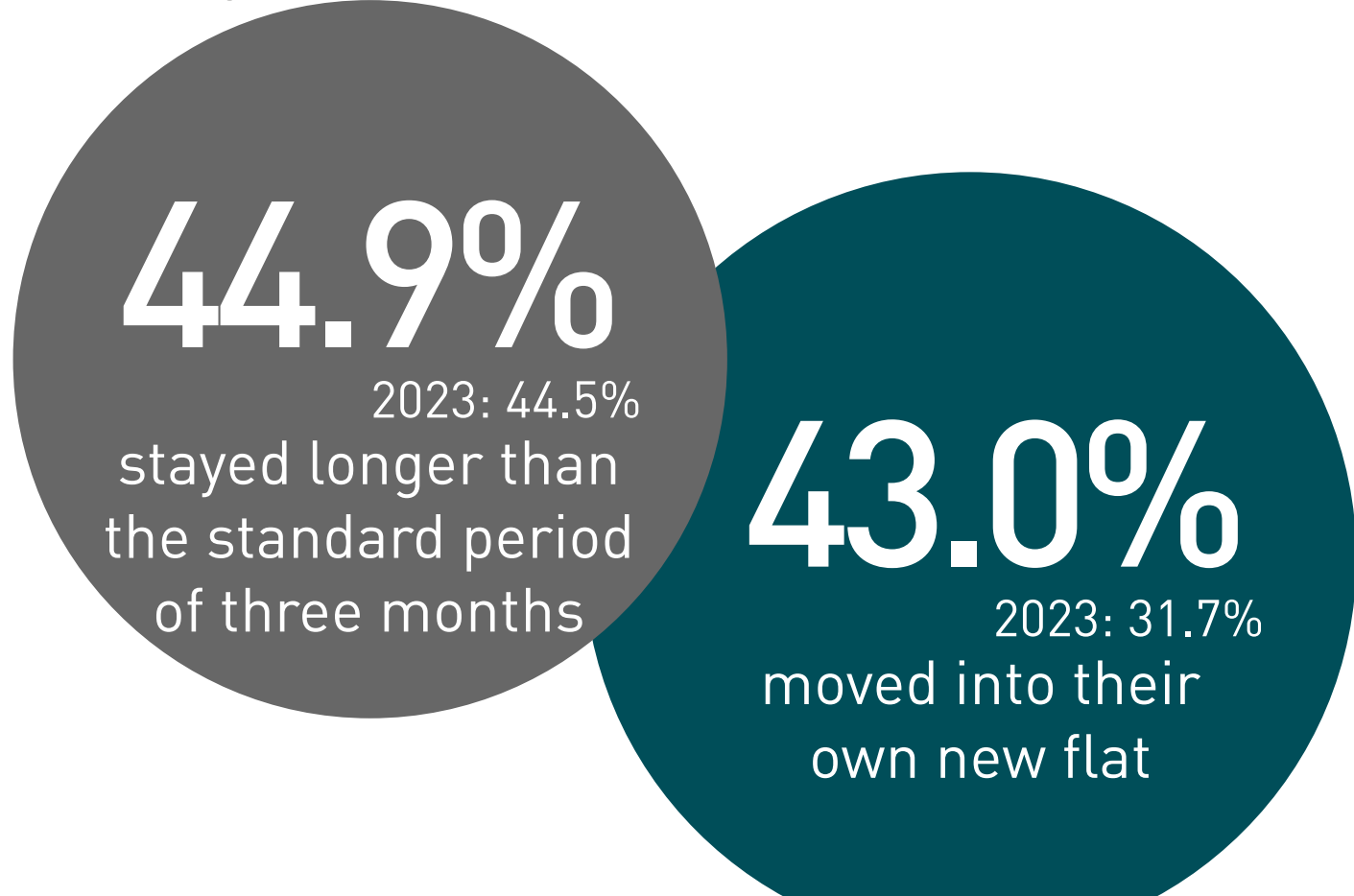
Regarding the gender of the perpetrators, the average distribution from 2021 to 2023 was as follows:



Residents 2023: n = 120; 2022: n = 99; 2021 n = 80

// DURATION OF STAY AND MOVE-OUT

Three-year average:



Residents 2023: n = 120; 2022: n = 99; 2021 n = 80

CONCLUSIONS

- Men are vulnerable and can experience violence in domestic settings. All known forms of domestic violence were reported.
- Men's shelters offer gender-specific access to support services and provide protection for affected men and their children. However, few children have so far moved into the shelters together with their fathers.
- Over the three reporting years, the number of requests increased steadily. Men's shelters are becoming better known, and male victims more visible. Awareness-raising efforts by the Federal

Coordination Office for the Protection of Male Victims of Violence are showing results. Young and older men in particular are not well reached by men's shelters.

- Half of the residents stayed no longer than three months. The others needed help from the men's shelter for more than three months but less than a year
- Most move-ins were near the men's former place of residence.
- A nationwide expansion is urgently needed — especially in regions without men's shelters.

